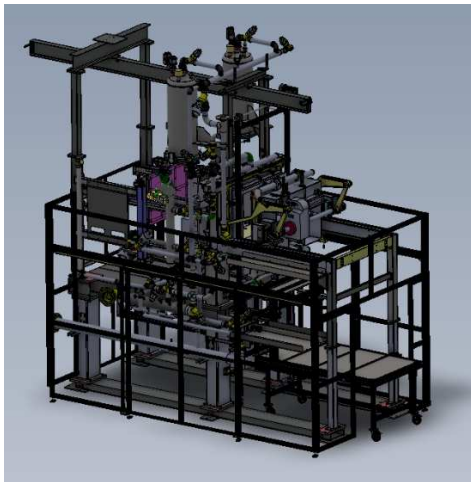




Molding machines

FoamaTec GmbH
Im Gewerbegebiet Heide 1
D-56357 Bogel
Tel.: +49 (0) 6772-9698 110
Fax.: +49 (0) 6772-9698 115
Email: info@foamatec.de
www.foamatec.com

EPS machines with electromotive form drive Type EE



Properties General

Machine Type	Part size maximum	Stroke	Pressurefiller Volume
FT-EE 870 / 670	670 x 870mm	800 / 1000mm	40 - 60l
FT-EE 1070 / 670	670 x 1070mm	800 / 1000mm	60 - 90l
FT-EE 1070 / 870	870 x 1070mm	800 / 1000mm	60 - 120l
FT-EE 1270 / 870	870 x 1270mm	800 / 1000mm	60 - 120l
FT-EE 1395 / 670	670 x 1395mm	800 / 1000mm	60 - 250l
FT-EE 1395 / 870	870 x 1395mm	800 / 1000mm	60 - 250l
FT-EE 1510 / 870*	870 x 1510mm	800 / 1000mm	60 - 250l

** only available with a motorized ejector plate*

Special sizes

Deviating from the standard sizes, special dimensions are also possible up to a usable area of 1.35m² !!

Processing pressure: 1.5 bar

Materials: EPS, copolymers, biopolymers

Accessories: additional pressure filler, removal system, motor-driven ejector plate, multi-axis portal axis system and much more.

Special accessories: on request

Molding machines

FoamaTec GmbH
 Im Gewerbegebiet Heide 1
 D-56357 Bogel
 Tel.: +49 (0) 6772-9698 110
 Fax.: +49 (0) 6772-9698 115
 Email: info@foamatec.de
www.foamatec.com

EPS machines with hydraulic mold drive Type E



Properties General

Machine Type	Part size maximum	Stroke	Pressurefiller Volume
FT-E 870 / 670	670 x 870mm	Bis 1100	40 - 60l
FT-E 1070 / 670	670 x 1070mm	Bis 1500	60 - 90l
FT-E 1070 / 870	870 x 1070mm	Bis 1500	60 - 120l
FT-E 1270 / 870	870 x 1270mm	Bis 1500	60 - 120l
FT-E 1395 / 670	670 x 1395mm	Bis 1500	60 - 250l
FT-E 1395 / 870	870 x 1395mm	Bis 1500	60 - 250l
FT-E 1510 / 870	870 x 1510mm	Bis 1500	60 - 250l
FT-E 1485 / 1285*	1285 x 1485mm	Bis 1500	60 - 250l
FT-E 1650 / 870*	870 x 1650mm	Bis 1500	60 - 400l
FT-E 1650 / 1350*	1350 x 1650mm	Bis 1500	60 - 400l
FT-E 2100 / 1100*	1100 x 2100mm	Bis 1500	90 - 400l
FT-E 2100 / 1300*	1300 x 2100mm	Bis 1500	90 - 400l

* EPP version with locking

Special sizes

Deviating from the standard sizes, special dimensions are also possible up to a usable area of 3.5m² !!

Processing pressure: 1.5 – 6.0bar

Materials: EPP, EPS, copolymers, biopolymers

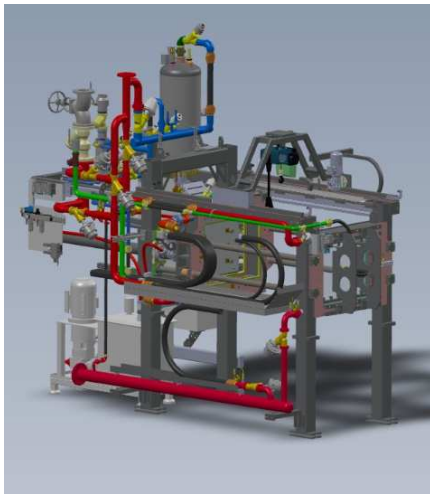
Accessories: additional pressure filler, removal system, motor-driven ejector plate, multi-axis portal axis system and much more.

Special accessories: on request

Molding machines

FoamaTec GmbH
Im Gewerbegebiet Heide 1
D-56357 Bogel
Tel.: +49 (0) 6772-9698 110
Fax.: +49 (0) 6772-9698 115
Email: info@foamatec.de
www.foamatec.com

EPS machines with hydraulic mold drive Type K



Properties General

Machine Type	Part size maximum	Stroke	Pressurefiller Volume
FT-K 800 / 600	800 x 600mm	Bis 2000	40 - 60l
FT-K 1000 / 700	1000 x 700mm	Bis 2000	60 - 90l
FT-K 1000 / 800	1000 x 800mm	Bis 2000	60 - 120l
FT-K 1300 / 800	1300 x 800mm	Bis 2000	60 - 120l
FT-K 1400 / 1200	1400 x 700mm	Bis 2000	60 - 250l
FT-K 1600 / 1200	1600 x 1200mm	Bis 2000	90 - 400l
FT-K 1800 / 1200	1800 x 1200mm	Bis 2000	90 - 400l
FT-K 1800 / 1300	1800 x 1300mm	Bis 2000	90 - 400l
FT-K 2100 / 1100	2100 x 1100mm	Bis 2000	90 - 400l

Special sizes

Deviating from the standard sizes, special dimensions are also possible up to a usable area of 3.5m² !!

Processing pressure: 1.5 – 6.0bar

Materials: EPP, EPS, copolymers, biopolymers

Accessories: additional pressure filler, removal system, motor-driven ejector plate, multi-axis portal axis system and much more.

Special accessories: on request